

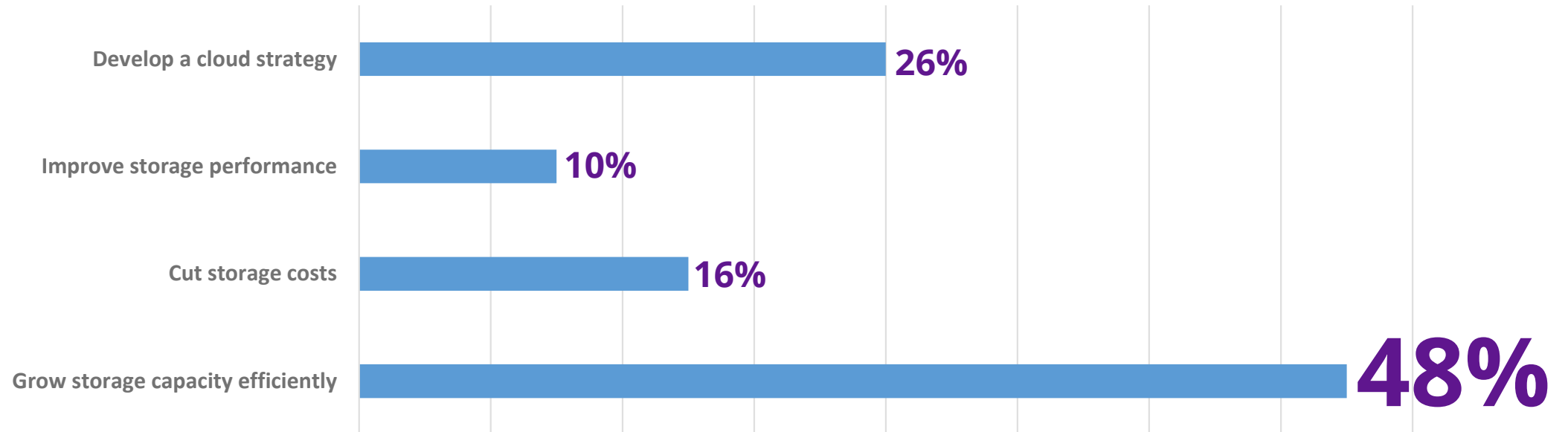
Overcome Top 3 Roadblocks to Growing Storage Capacity

Krishna Subramanian

Komprise

What is your top storage priority in the next 12 months?

What is your top storage priority in the next 12 months?



Unstructured Data Growth is Everywhere

44 Zettabytes

5 Zettabytes

Unstructured Data

Structured Data

2020

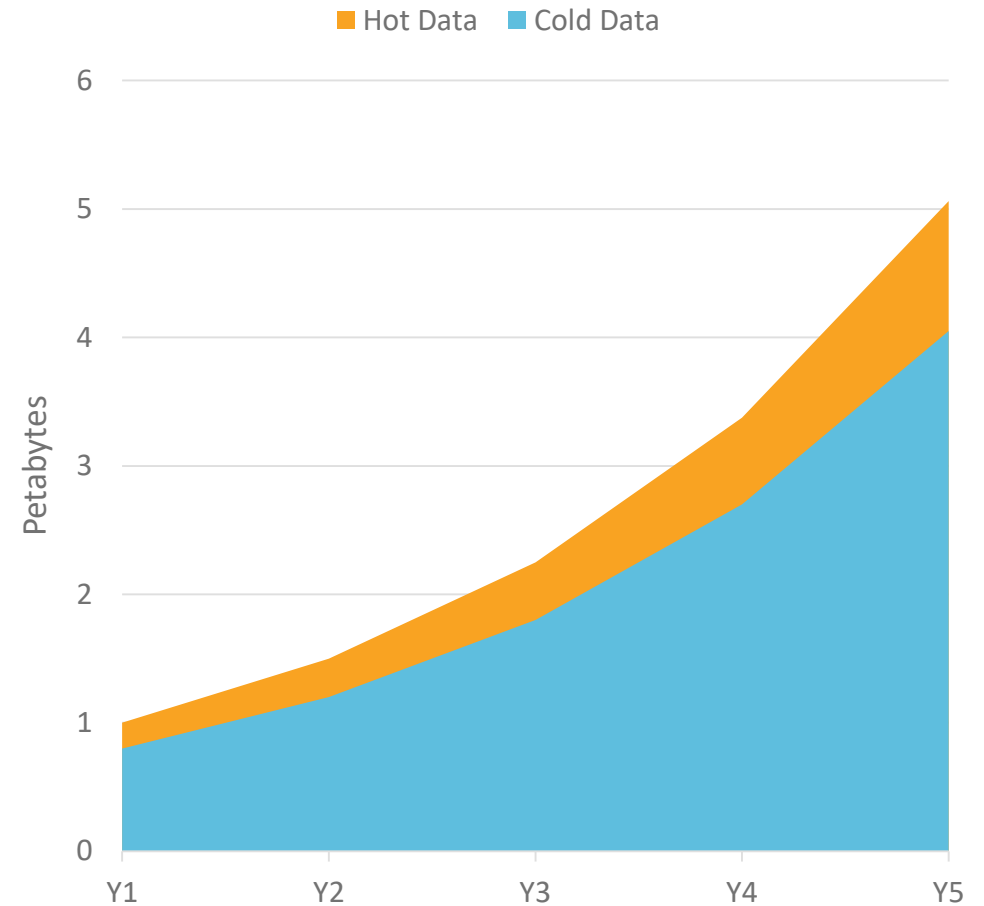
Most Unstructured Data is Inactive & Growing Rapidly

90% of data created in the last 2 years

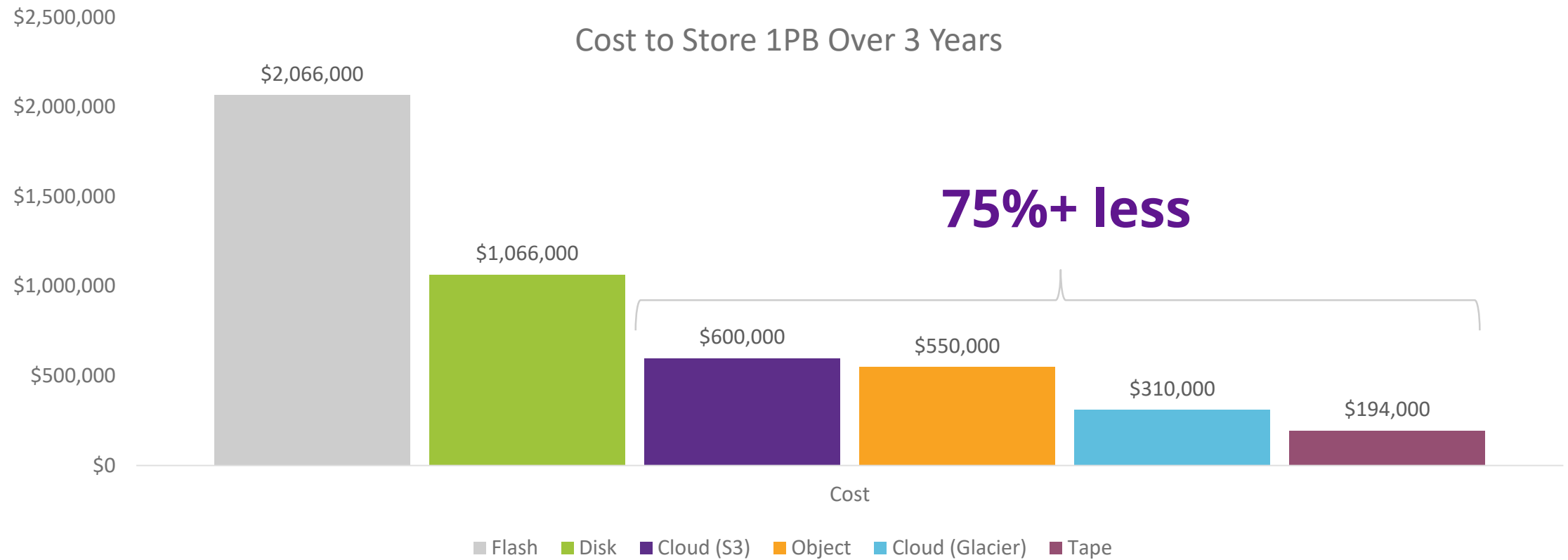
60-80% of unstructured data is cold/inactive

30-50% per year file data growth

300% per year machine generated data growth



Lower Cost Options Are Available for Cold Data



Sources and assumptions: Includes product price, 3 years of support & hosting fees

Why is Efficiently Growing Storage Capacity so Hard?

Roadblock #1: Flying Blind With Data

“ I have managed petabytes of data for the last two decades, and I still don’t really know much about our data”

“ It’s as if we are living in the dark, we really don’t know how much zombie data we have”

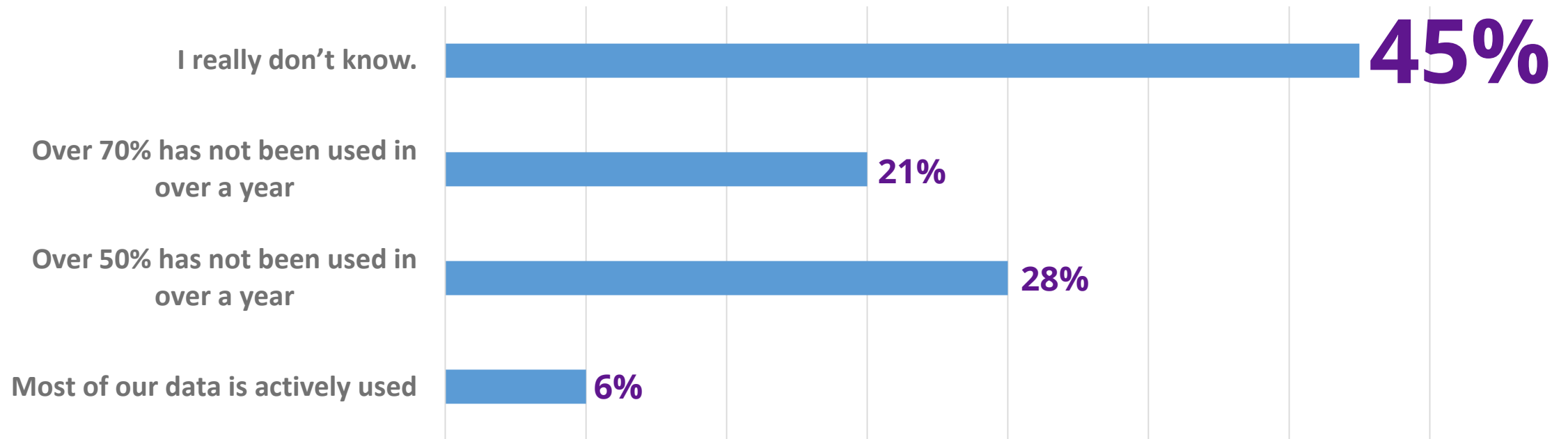
“ Our data footprint is growing rapidly, but IT is always the last to know – we have to guess our capacity growth needs”

“ Our environment is too complex – we have multiple data centers, storage from nearly every vendor, it is too hard to get an accurate picture”



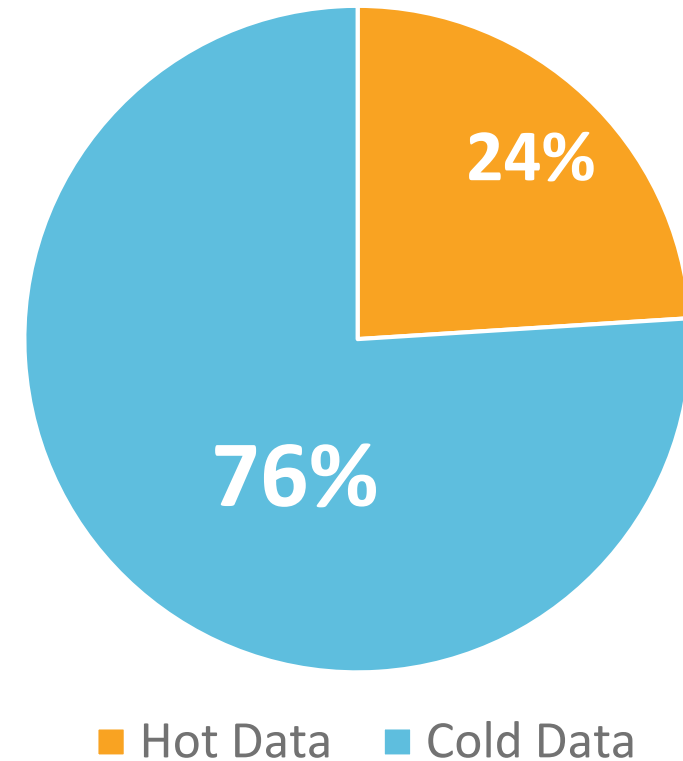
How much Cold Data do you think your organization has?

How much inactive/cold data do you think your organization has?



Actual Amount of Cold Data Not Accessed in > 1 Year

Industry	Cold Data	YoY Growth
Banking, Insurance	66%	22%
Healthcare	82%	18%
M&E	88%	20%
Genomics	45%	300%+
EDA	61%	25%



Roadblock #2: Quantifying How Much You Can Save

“ I hate having the same conversation with my CFO every year – the Storage spend simply keeps going up”

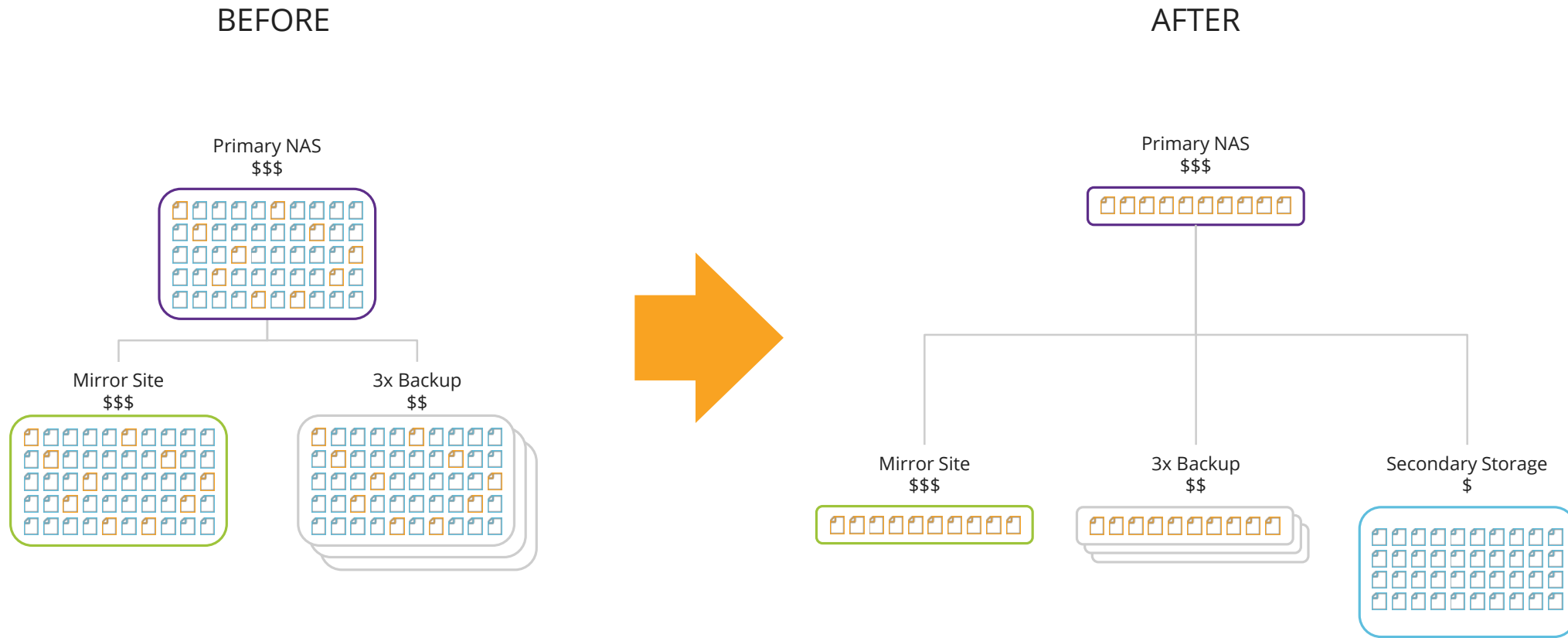
“ We have a fragmented data environment that is a pain to administer and impossible to get a good view across”

“ We are overwhelmed by the array of storage choices, and yet any path we pick holds us captive and locked-in”

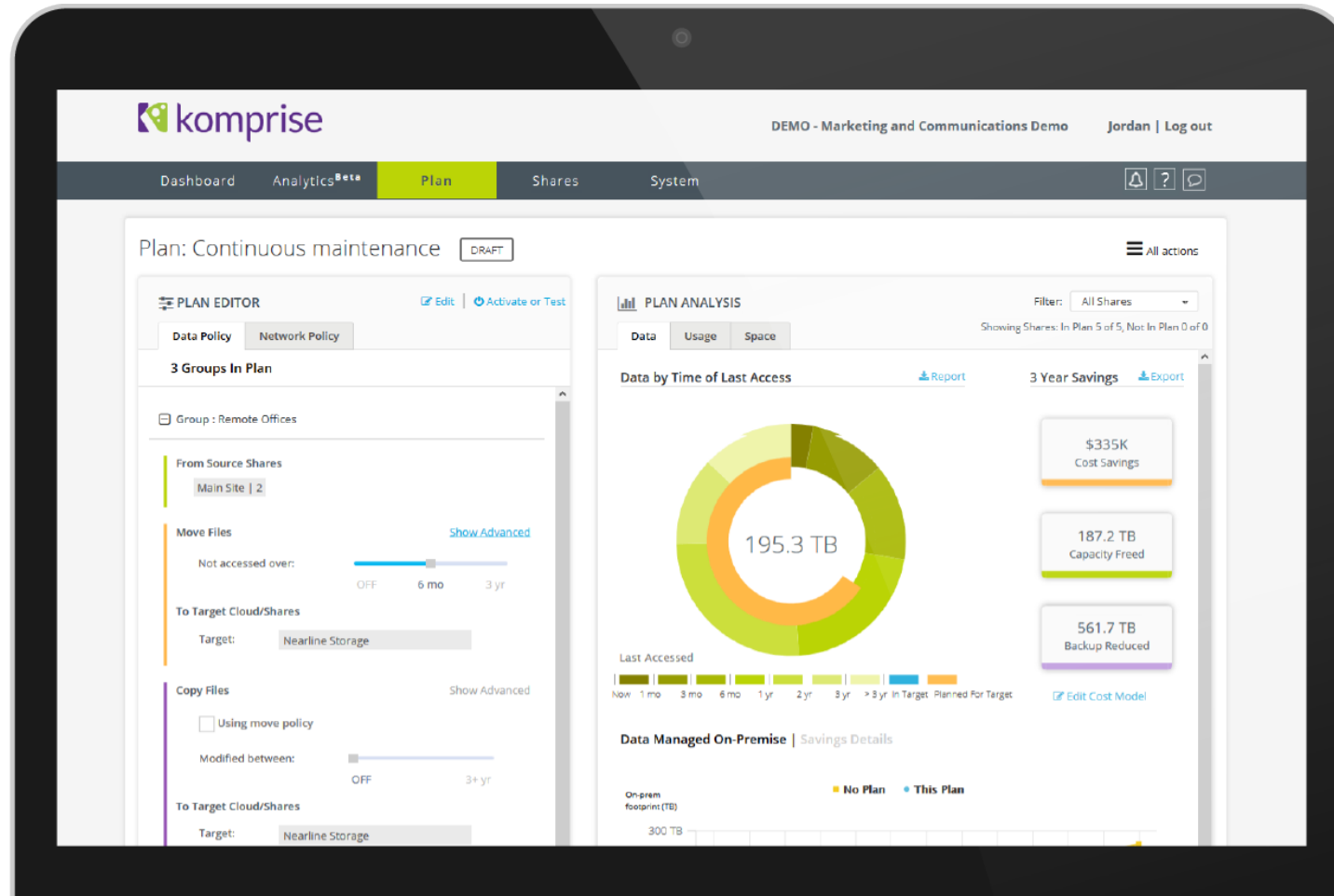
“ We want IT to be viewed as a business partner, not as a cost center, which it currently is.”



3x+ Savings on Every Terabyte Moved Out of Primary Storage



How can you quantify savings in your own environment with your cost model?



Roadblock #3: Cannot Disrupt Users and Apps

“ Asking users to look elsewhere for data is a non-starter”

“ We cannot rewrite our file-based applications to leverage the cloud”

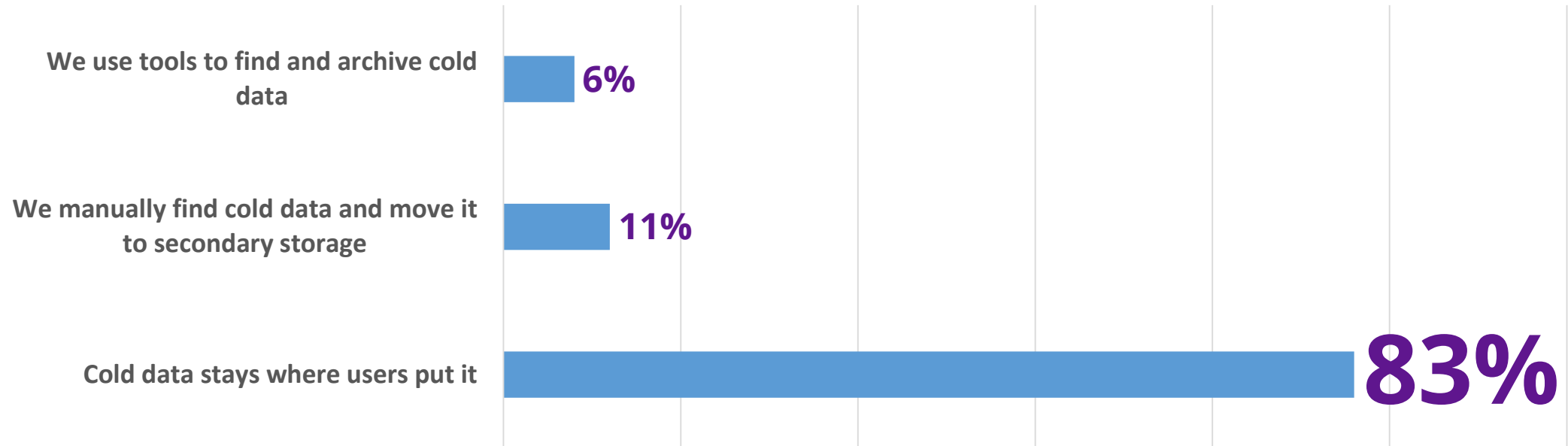
“ Asking users to clean up their data or asking for their permission never works, we need a transparent solution”

“ We feel we are held hostage by our storage provider, any option we pick leaves us locked in”



How are you managing your cold data today?

How are you managing your cold data today?



Three Key Roadblocks to Growing Storage Capacity Efficiently



Data Trapped in Silos,
No Visibility



Unable to
Quantify Value



Cannot Disrupt
Users & Apps

Komprise Eliminate these Barriers



Analytics of Your
NAS Data Usage & Growth



Modern Automation:
ROI-Driven,
No Agents, No Stubs,
No Scaling Limits



Zero Changes to
Users & Apps –
File Access Exactly as
Before

Technical Differentiators

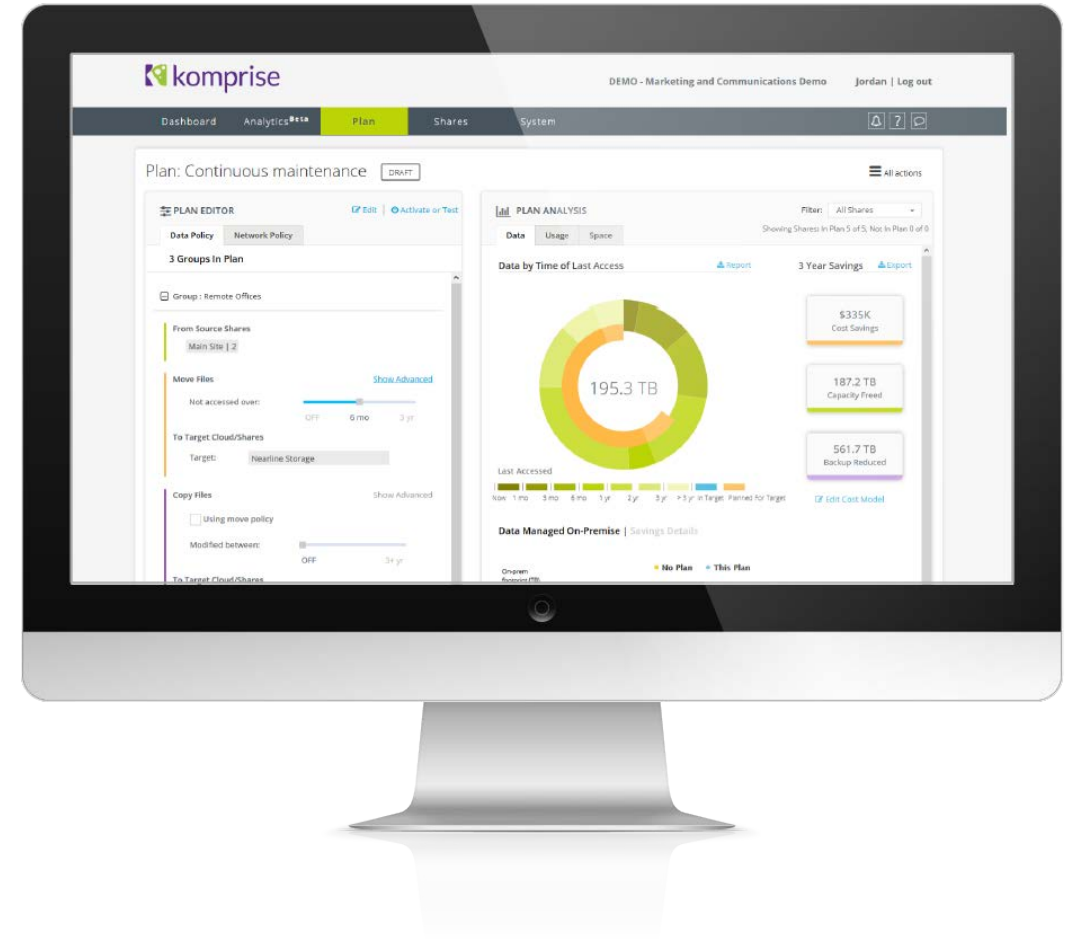
No storage agents, no hardware

No static stubs, no impact on hot data path

No training needed, no complex configurations

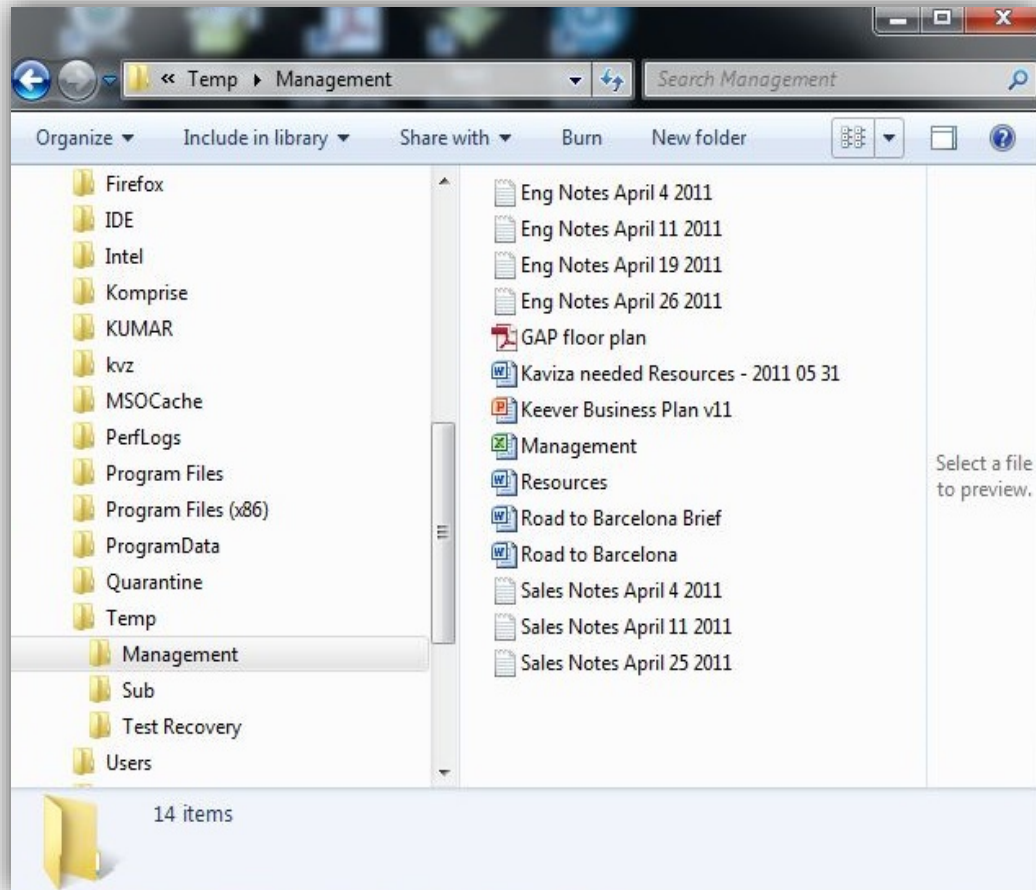
No upfront costs, no scaling limits

No lock-in

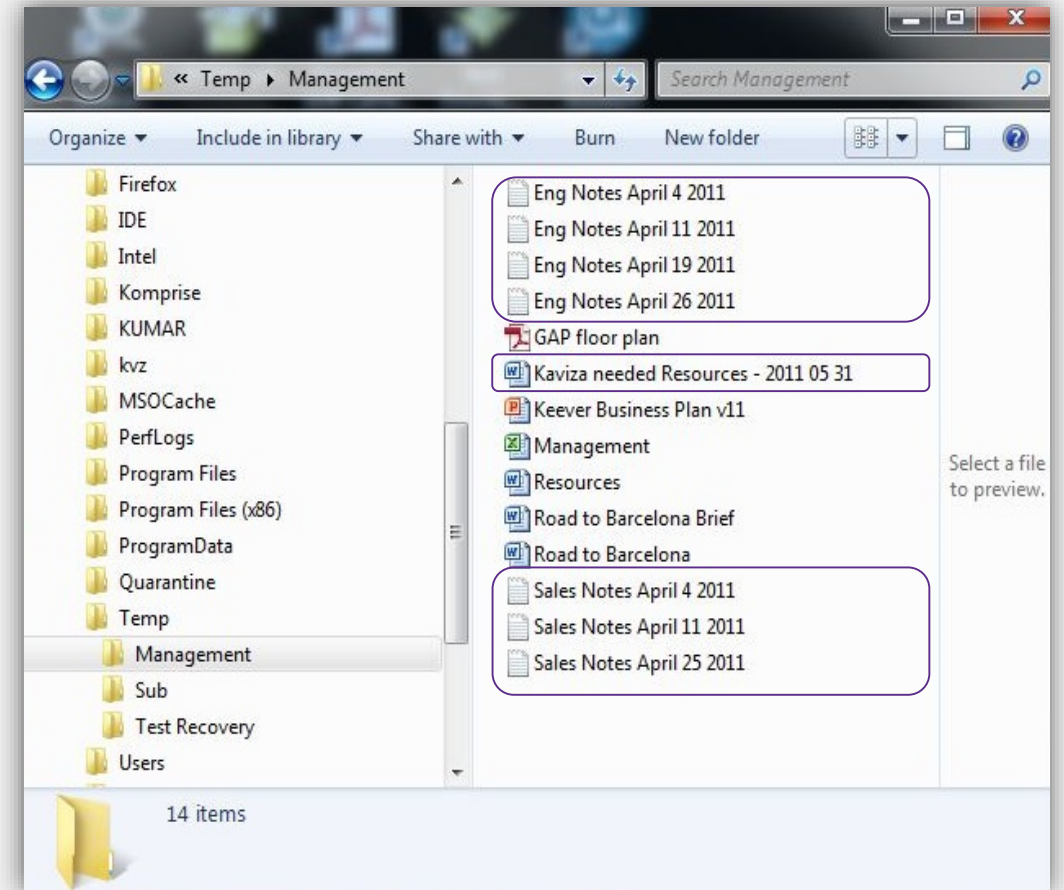


No Changes to User or Application Access

Before Migration



After Migration



Use Cases Addressed by Komprise



Capacity
Planning



Live
Transparent
Archive



Replication
& Data
Recovery



Data
Migration



File Access
To Object Data

About Komprise

- Leader in Intelligent Data Management
- Built from the ground up to eliminate cost and complexity
- Adaptive, no stubs, no agents, no dedicated infrastructure, no scaling limits
- Customers include Fortune 500
- 100s of PBs of data under management

“Komprise appeals to IT organizations with growing unstructured data—it gives a new weapon in the arsenal for IT leaders to make decisions on data.”

- Vice President, Gartner

The Gartner Cool Vendor 2017 award logo, consisting of the text 'Gartner Cool Vendor 2017' in white on a blue rectangular background.

Understand your storage capacity
growth and usage.

Email info@komprise.com
for a Free Trial

THANK YOU!

Learn more at

[Komprise.com](https://www.komprise.com)

Twitter: [@komprise](https://twitter.com/komprise)

1.888.995.0290

1901 S. Bascom

Campbell, California 95008