

Civil Engineering Firm Archives Legacy Fileshare Data on Joint Komprise & Spectra Logic Solution

THE CHALLENGE

LJA Engineering, Inc. manages over 300TB of data that they are required, by industry standard, to keep for a minimum of ten years. The engineering firm needed a solution that would allow them to identify legacy data and transparently move it to a live archive on a daily basis. The firm's data is growing at approximately twenty percent year over year. Their network environment included several HP MSL 4048 tape libraries, but LJA was looking for a NAS product that would provide a live archive and incorporate easily into their existing infrastructure. Additionally, the firm wanted visibility across their storage, and an automated approach to continuously identify cold data and move it by policy without changes to user and application access.

THE SOLUTION

LJA Engineering, Inc. also considered HPE, Tegile and Equallogic offerings, but ultimately decided on Komprise in combination with a Spectra® Verde® NAS Solution. "We chose Komprise because it gives us visibility into our data across our Windows and Linux storage, and its analytics-driven policy-based automation eliminates manual management, but most importantly it enables users and applications to continue accessing the moved data exactly as before, and we chose Spectra Logic's Verde NAS solution for its industry reputation, price point and integration with Komprise," said David Kimball, LJA Engineering's IT Manager. The engineering firm is using Komprise to analyze and manage data across both Windows CIFS and Linux NFS shares and moving data to the Verde NAS Solution with seventy-five 8TB disk drives and currently storing 300TB of data.

LJA Engineering can now manage projects, user data, and files in a dual disk and tape network environment. Komprise provides the simplest, most open and non-intrusive way to manage data across storage with its agentless, stubless, scale-out architecture. Data is identified and automatically archived to the Verde NAS Solution from various storage systems, including Windows and Linux file servers via Komprise. Komprise provides a single view of the organization's data across its storage platform and makes it simple to reduce storage costs without impacting users. "Together, the Spectra Logic and Komprise solution enables us to manage data growth efficiently," said Kimball.

PROFILE



LJA Engineering, Inc. is the largest employee-owned civil engineering firm. Based in Houston, Texas, the firm has been in business since 1972 when John 'Dutch' Lichliter founded The Lichliter Company. As the company grew, it became LJA Engineering and Surveying in 1997, and then evolved again in 2011 to become the present-day LJA Engineering, Inc. The employee-owned firm has scaled from 47 employees to over 600. Today, the firm has multiple offices in Texas, Nebraska and Florida. LJA is a full-service engineering firm that provides engineering, planning and design services for both private and government clients.

Together, the Spectra Logic & Komprise solution enables us to manage data growth efficiently

David Kimball, IT Manager
LJA Engineering, Inc.



KOMPRISE INTELLIGENT DATA MANAGEMENT

Komprise enables businesses to handle the incoming flood of data by providing automated software that adapts to the customer's environment and scales across their storage silos, on-premise and cloud storage. The Komprise data-aware management software empowers businesses to manage today's massive scale of data growth while unlocking data value. Komprise analyzes data across NFS and SMB/CIFS storage, and moves data transparently by policy across NFS, SMB/CIFS and REST/S3 storage. The modern scale-out architecture required no agents, no dedicated hardware or storage, no complex setup or proprietary integrations, delivers native access to data in the cloud and is delivered as a hybrid cloud service.

SPECTRA VERDE NAS

The Spectra Verde NAS Solution is an optimal disk platform for the storage of mid-tier data, including primary storage offload, data staging, backup and archiving. Flexible, simple and affordable, the Spectra Verde delivers file storage for as low as 7.5 cents per gigabyte. The expandable Verde disk solution provides raw storage capacities from 48TB to 7.1PB. Designed for a variety of workloads, a single Verde NAS solution supports three different disk drive types, including 4TB, 8TB and 12TB enterprise drives; 8TB archive drives; and high-performance SSD drives. Reliable, economical and archive-ready, Spectra Verde simplifies the data storage process.

NEXT STEPS

Complimentary Trial

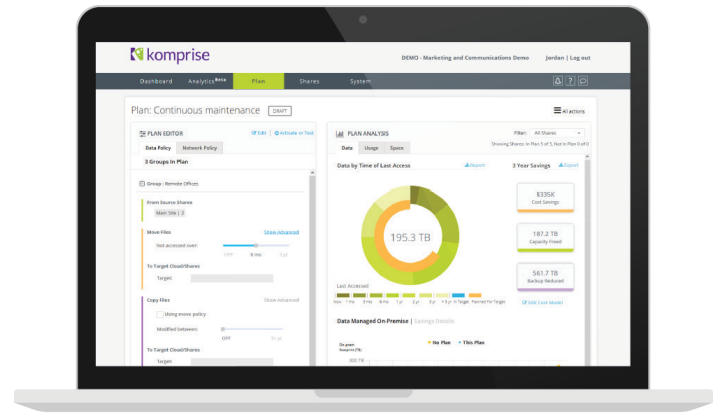
Sign up for a complimentary trial of Komprise in your own environment and see how much you can save by transparently archiving, replicating, and migrating the right data using Komprise.

Contact Us

Call: 1-888-995-0290

Email: info@komprise.com

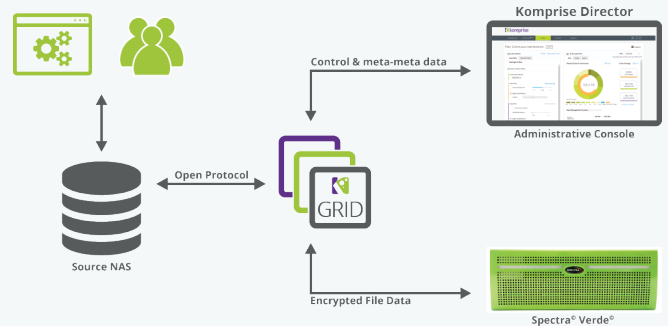
Visit: komprise.com



ENVIRONMENT SNAPSHOT

- Managing over 300TB of data
- Komprise data management software
- Spectra Verde NAS Solution
- 75 8TB disk drives
- HP Procurve—switches 5400R/5400/3810/3500
- 10Gig Ethernet

ARCHITECTURE



WHY KOMPRISE?

- No static stubs that get corrupted or orphaned
- No storage agents
- No changes to the hot data path
- Native access to moved data
- No expensive licenses
- No scaling limits

WHY SPECTRA?

- High-speed performance
- Low cost per terabyte
- De-dupe & compression through Komprise compatibility
- Scalable solutions



Komprise, Inc.
1901 S. Bascom Ave. Suite 400
Campbell, CA 95008
United States

For media requests email marketing@komprise.com
©2018 Komprise, Inc. All rights reserved.